



链滴

# netdata 监控搭建及使用

作者: [Leif160519](#)

原文链接: <https://ld246.com/article/1568097501552>

来源网站: [链滴](#)

许可协议: [署名-相同方式共享 4.0 国际 \(CC BY-SA 4.0\)](#)



官方说明: <https://docs.netdata.cloud/zh/backends/>

## 安装

### installer\_for\_linux.sh (Linux平台通用)

```
bash <(curl -Ss https://my-netdata.io/kickstart.sh)
```

### installer\_for\_docker.sh (Docker平台, 安装迅速快捷)

```
#!/usr/bin/env bash
docker run -d --name=netdata \
-p 19999:19999 \
-v /etc/passwd:/host/etc/passwd:ro \
-v /etc/group:/host/etc/group:ro \
-v /proc:/host/proc:ro \
-v /sys:/host/sys:ro \
-v /var/run/docker.sock:/var/run/docker.sock:ro \
--cap-add SYS_PTRACE \
--security-opt apparmor=unconfined \
netdata/netdata
```

## 界面效果

浏览器输入: <http://ip-address:19999>

## 总览



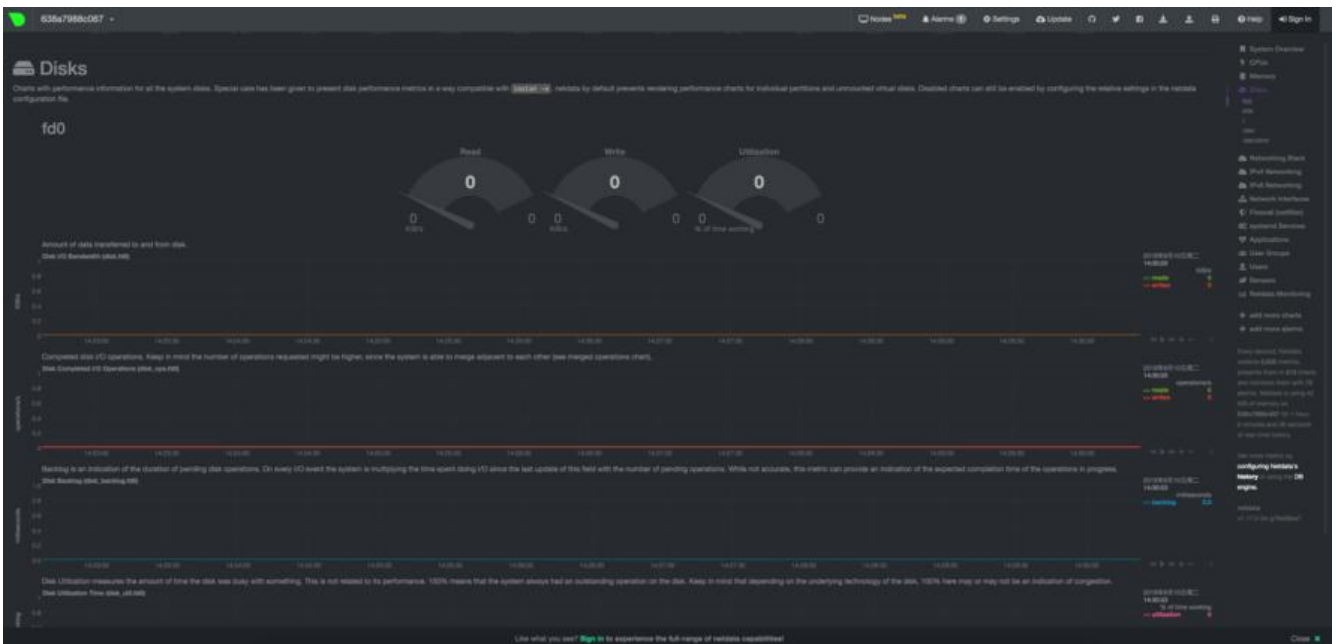
# CPU



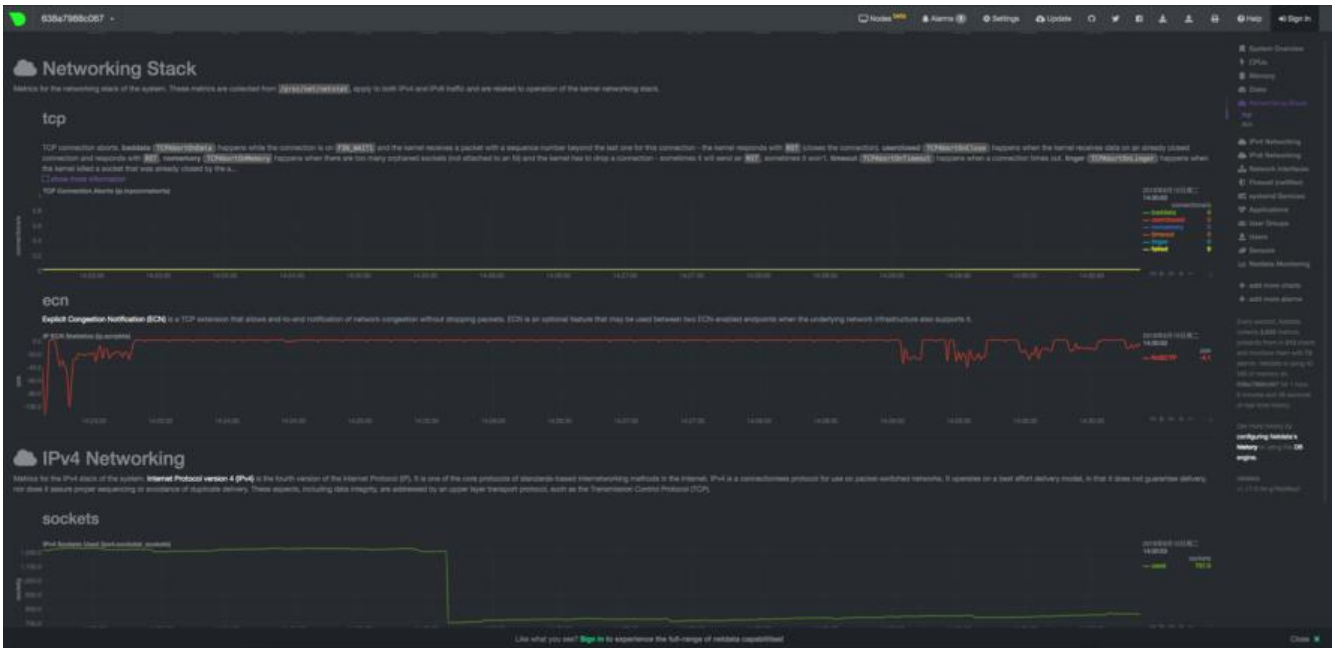
# 内存



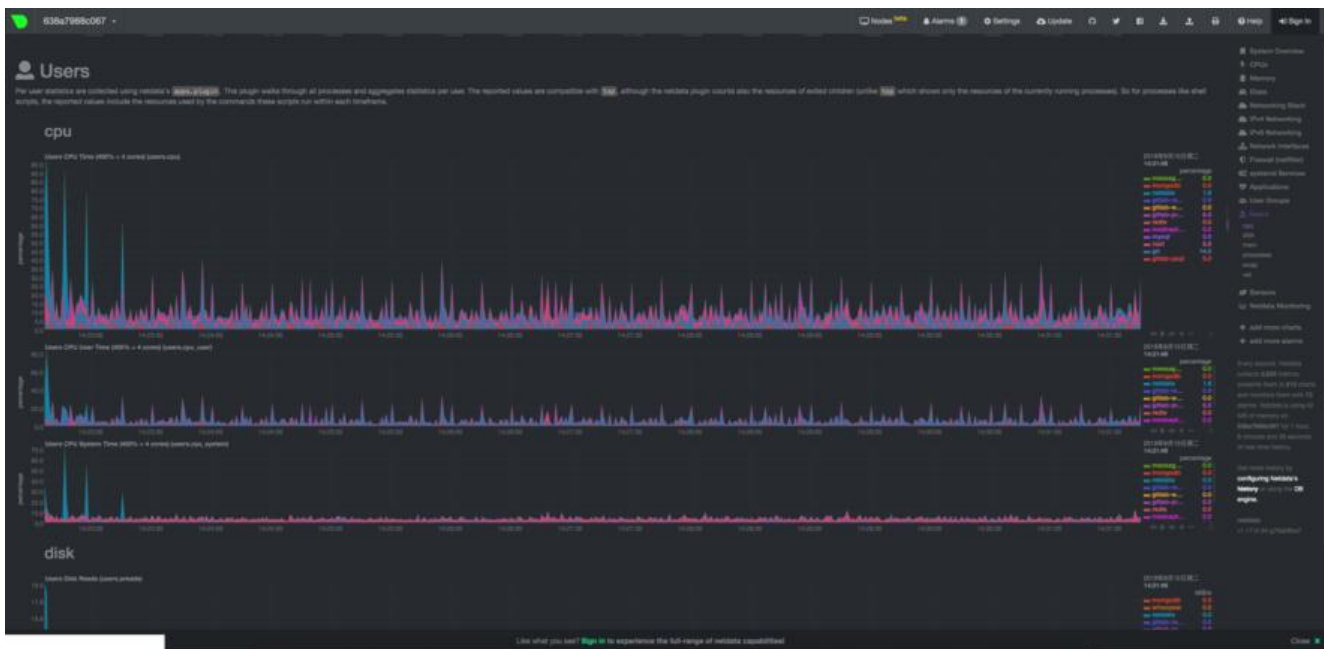
## Disk



## Network



## 用户活动



## 添加多个监控节点

点击nodes，之后用github账号登录，成功过后可以将改节点添加你的账户下并自动跳转到所有节点面



## Authorization

Node (<http://192.168.3.233:19999/console.html>) is requesting access to your account. \*

 AUTHORIZE WITH GOOGLE

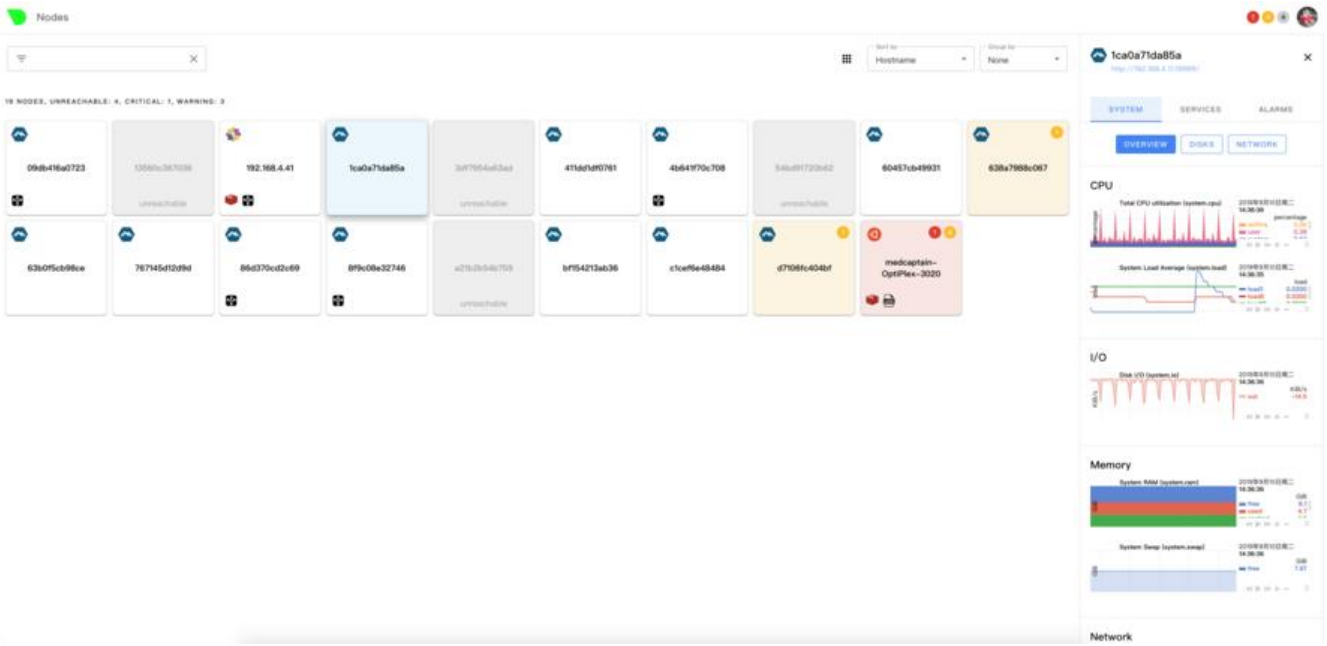
 AUTHORIZE WITH GITHUB

Authorize with your email

AUTHORIZE

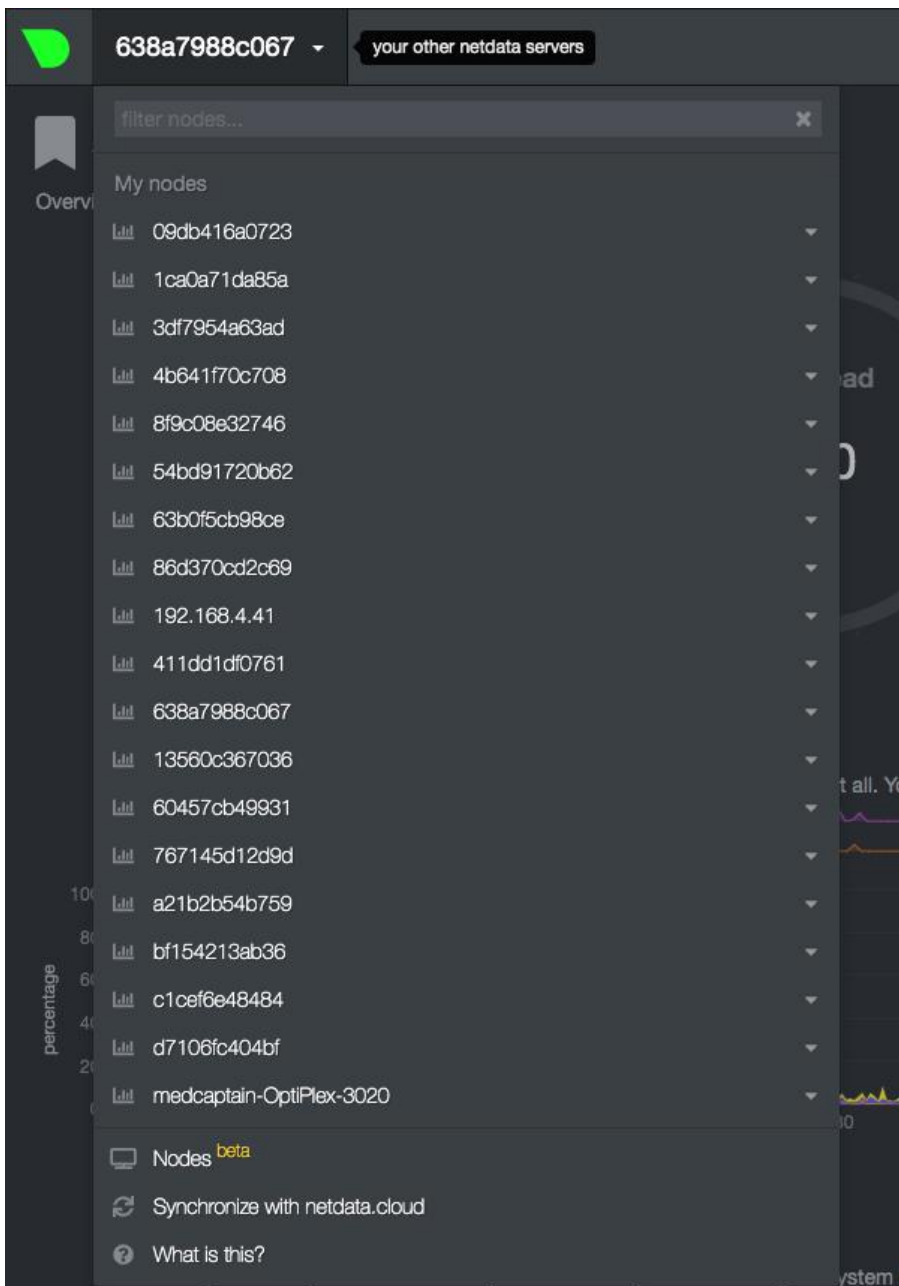
\* If you don't have an account, it will be created automatically.

点击其中一个节点方块，右边会自动显示该节点的一些信息



主界面点击任意节点名即可切换至该节点





点击三角箭头即可查看真实IP地址和端口号

